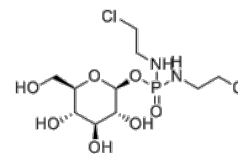


Product Name : Glufosfamide
Cat. No. : PC-61486
CAS No. : 132682-98-5
Molecular Formula : C₁₀H₂₁Cl₂N₂O₇P
Molecular Weight : 383.16
Target : DNA Alkylator/Crosslinker
Solubility : 10 mM in DMSO



Biological Activity

Glufosfamide (D19575) is a conjugate of glucose and active **alkylating** moiety of ifosfamide with potentially enhanced selectivity for tumors that overexpress transmembrane glucose transporters.

Glufosfamide has the better cell permeability than ifosfamide.

Glufosfamide utilizes the normal cell glucose transport mechanism (SAAT1) for transport into the cell, enhances the activity of gemcitabine in vitro and in vivo.

References

Veyhl M, et al. *Proc Natl Acad Sci U S A*. 1998 Mar 17;95(6):2914-9.

Styczynski J, et al. *Anticancer Res*. 2002 Jan-Feb;22(1A):247-50.

Seker H, et al. *Br J Cancer*. 2000 Feb;82(3):629-34.

Ammons WS, et al. *Neoplasia*. 2007 Aug;9(8):625-33.

Caution: Product has not been fully validated for medical applications. Lab Use Only!

E-mail: tech@probechem.com